

Full Range for Tower Control

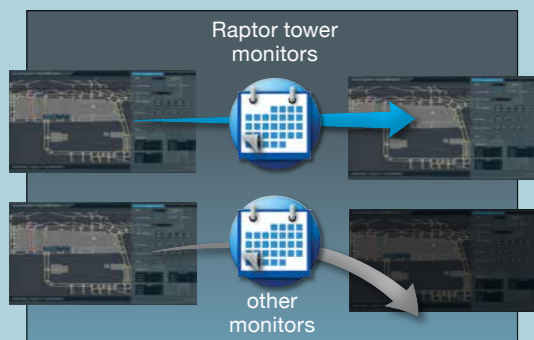
# Visibility

## Wide Brightness Range



Raptor tower monitors achieve an exceptionally wide brightness range from 10 to up to 750 cd/m<sup>2</sup> (varies by model) for viewing in changing ambient lighting conditions. The Raptor RP3225 and RP2425 include an adjustment dial for smooth brightness control.

## Backlight Stabilization



EIZO's fully automated backlight stability function uses an internal sensor to stabilize the brightness level throughout the life of the monitor, compensating for fluctuations caused by variations in ambient temperature and the passage of time.

## Flicker-Free Images



Due to the way brightness is controlled with LED backlights, a small number of people perceive flicker on their screen which causes eye fatigue. Raptor tower monitors regulate brightness to make flicker unperceivable without compromising color stability.

## Antiglare Protection Glass



Each Raptor tower monitor is equipped with antiglare protection glass to ensure that the screen maintains high visibility even in bright ambient lighting.

# Usability

## Touch Panel Capability



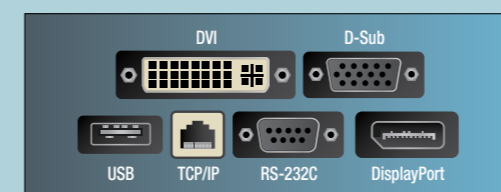
The Raptor RP3225 and RP2425 feature a projected capacitive touch panel with reduced reflections, high touch durability, and multi-touch support. Fully flat, they provide a seamless touch experience.

## Resolution Options



The Raptor RP3225 and RP2425 offer 3840 x 2160 and 1920 x 1200 resolution respectively.

## Complete Connection



Each monitor is equipped with video inputs for supporting digital and/or analog signals. The Raptor RP3225 and RP2425 come equipped with a wide range of communication interfaces for connection to a network, remote monitor management, or maintenance purposes.

## Mounting Flexibility



To meet the requirements of any installation, EIZO's tower monitors offer multiple configurations such as panel mount for installing directly into a console or VESA for mounting on an arm or stand.

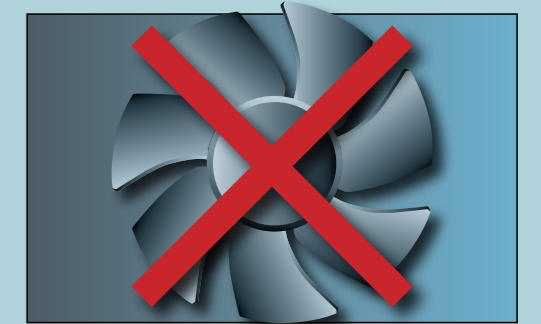
# Durability and Reliability

## Industrial-Grade Housing



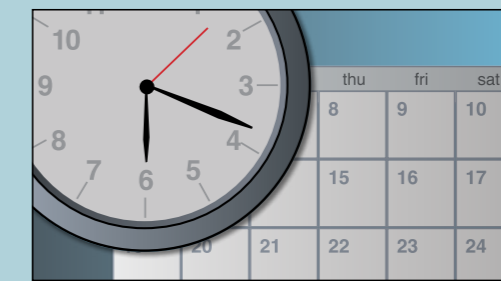
Each monitor uses full sheet-steel industrial-grade housing for durability and high performance in demanding environments.

## Fanless Operation



Raptor tower monitors provide noiseless, fanless operation while still maintaining low heat output without impacting performance.

## 24/7 Operation

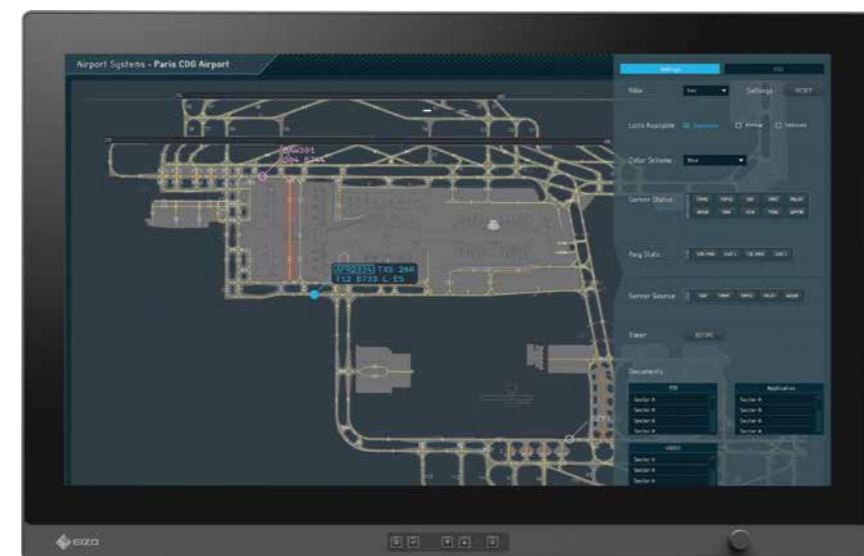


The monitors are developed specifically for meeting the stringent requirements of mission-critical ATC environments with 24/7 operation.

## Built-In Power Supply



While other solutions may require a bulky power brick to operate, Raptor tower monitors have the power supply built in. This provides a cleaner and more manageable installation area.



RP3225: 31.5" / 3840 x 2160



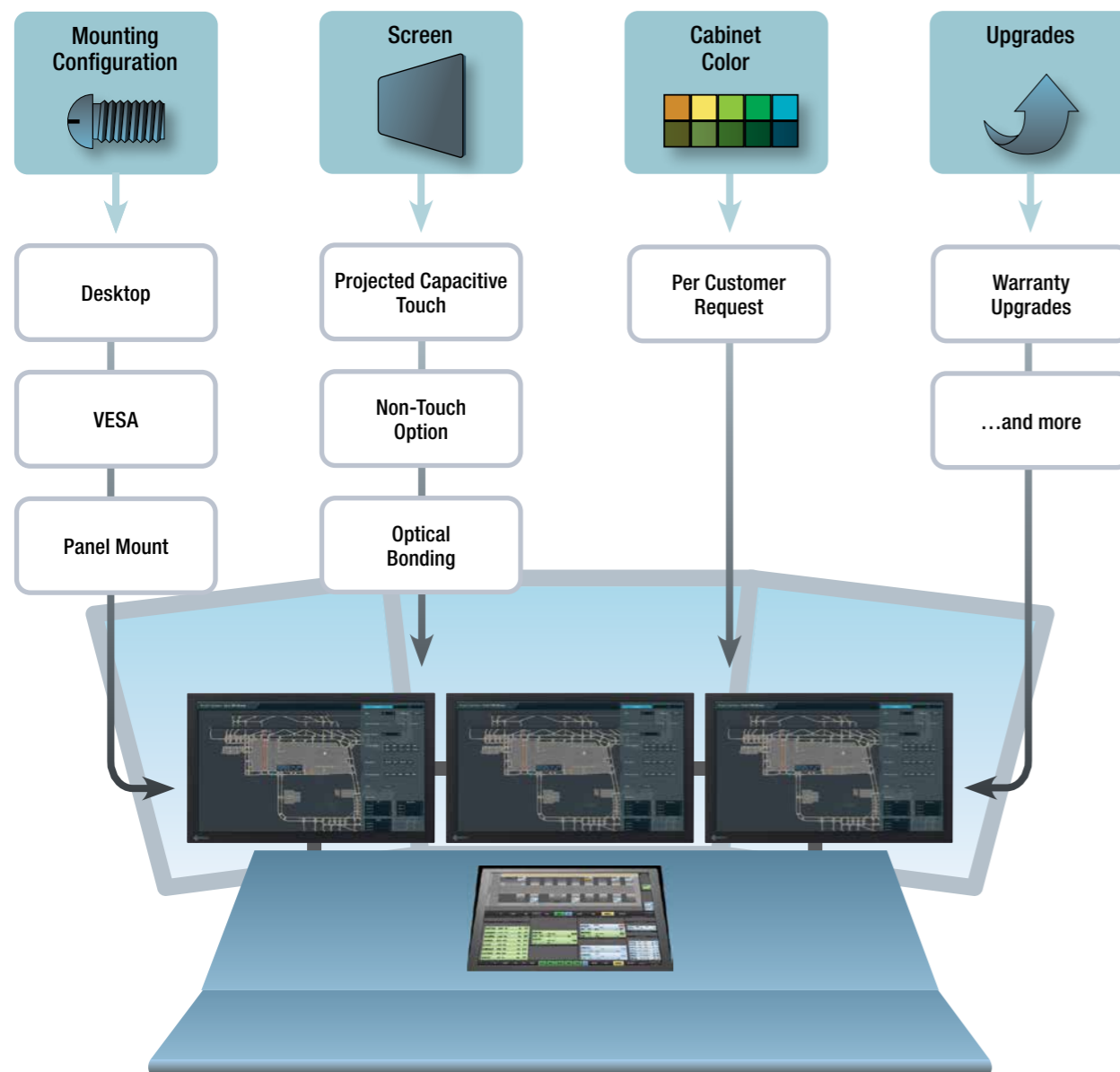
RP2425: 24.1" / 1920 x 1200

## 50+ Years of Technical Expertise

EIZO has been an industry leader in the innovation and development of quality monitors for ATC since 2005. Backed by over 50 years of technical expertise in visual display solutions, the Raptor series of tower monitors are built to meet the diverse requirements of any ATC environment.

## Extensive Customization

EIZO offers extensive customization in order to meet the specific needs of individual towers and control centers. Available options vary by model so please contact EIZO for details.



Contact us to configure your monitor.  
[atc@eizo.com](mailto:atc@eizo.com)

## Optional Accessory



### EACON-S01

External OSD keyboard for control of a single monitor.



## Specifications

		Raptor RP3225	Raptor RP2425
Panel	Type	VA	IPS
	Backlight	LED	LED
	Size	31.5" / 80 cm	24.1" / 61.2 cm
	Native Resolution	3840 × 2160 (16:9 aspect ratio)	1920 × 1200 (16:10 aspect ratio)
	Viewable Image Size (H × V)	697.9 × 392.6 mm	518.4 × 324 mm
	Pixel Pitch	0.182 × 0.182 mm	0.270 × 0.270 mm
	Display Colors	16.77 million	16.77 million
	Viewing Angles (H / V, typical)	176°, 176°	178°, 178°
	Brightness (typical)	10 – 700 cd/m <sup>2</sup>	10 – 750 cd/m <sup>2</sup>
	Contrast Ratio (typical)	1000:1	1000:1
Response Time (typical)	8 ms (gray-to-gray)	14 ms (gray-to-gray)	
Touch Panel	Type	Projected Capacitive	Projected Capacitive
	Communication Protocol	USB	USB
	Touch Points	10	10
	Compatible OS	Multi-Touch Support: Windows 10 / 8 / 7 (64-bit, 32-bit) / Linux (Kernel 2.6.38 or later) / Android (4.0.4 or later) Single Touch Support: Windows XP / Linux (older than Kernel 2.6.38) / Android (older than 4.0.4)	Windows 10 / 8.1 / 7 (64-bit, 32-bit) / Linux (Kernel 2.6.24 or later) (64-bit, 32-bit) / macOS / Mac OS X
Video Signals	Input Terminals	DVI × 2, DisplayPort × 2	DVI, DisplayPort, D-Sub mini 15 pin
	Digital Scanning Frequency (H / V)	30 – 140 kHz / 50 – 70 Hz	31.5 – 86 kHz / 50 – 76 Hz
	Analog Scanning Frequency (H / V)	—	31.5 – 86 kHz / 50 – 76 Hz
	Sync Formats	—	Separate Sync / Composite Sync / Sync on green
USB	Upstream	USB 2.0: Type-B	USB 2.0: Type-B
	Downstream	USB 2.0: Type-A × 2	USB 2.0: Type-A × 2
Audio	Speakers	1.0 W + 1.0 W	—
	Input Terminals	DisplayPort × 2	—
Power	Power Requirements	AC 100 – 240 V, 50 – 60 Hz	AC 100 – 240 V, 50 – 60 Hz
	Maximum Power Consumption	125 W (Brightness: 700 cd/m <sup>2</sup> )	75 W (Brightness: 700 cd/m <sup>2</sup> )
	Typical Power Consumption	65 W (Brightness: 150 cd/m <sup>2</sup> )	50 W (Brightness: 450 cd/m <sup>2</sup> )
	Standby Mode	10 W or less	4 W or less
Features and Functions	Brightness Stabilization	Yes	Yes
	Communication Interface	RS-232C, USB, RJ-45	RS-232C, USB, RJ-45
	Communication Protocol	SNMP, HTTP, HID, Modbus/TCP	SNMP
Physical Specifications	Dimensions (Without Stand, W × H × D)	774.8 × 501.4 × 91 mm	577 × 412 × 90 mm
	Net Weight (Without Stand)	17.1 kg	9.2 kg
	Hole Spacing (VESA Standard)	200 × 100 mm	100 × 100 mm, 200 × 100 mm
Environmental Requirements	Operating Temperature	0 – 35°C	0 – 40°C
	Operating Humidity (R.H., non condensing)	20 – 80%	Max. 80%
	Storage Temperature	-25 – 56°C	-25 – 50°C
	Degree of Protection	—	IP 40 (front) IP 20 (rear)
Certifications and Standards	CE, UL, FCC, REACH, RoHS, WEEE		
Warranty	Two Years		

## EIZO Technologies GmbH

Benzweg 3, 82538 Geretsried, Germany

Phone : +49-8171-3492-0 Fax : +49-8171-3492-16

[atc@eizo.com](mailto:atc@eizo.com)

[www.eizoglobal.com](http://www.eizoglobal.com)

EIZO, the EIZO logo, and Raptor are registered trademarks of EIZO Corporation in Japan and other countries. All other company names, product names, and logos are trademarks or registered trademarks of their respective companies. Screen images provided by THALES. Specifications are subject to change without notice.

Copyright © 2020 EIZO Corporation. All rights reserved. (200607)